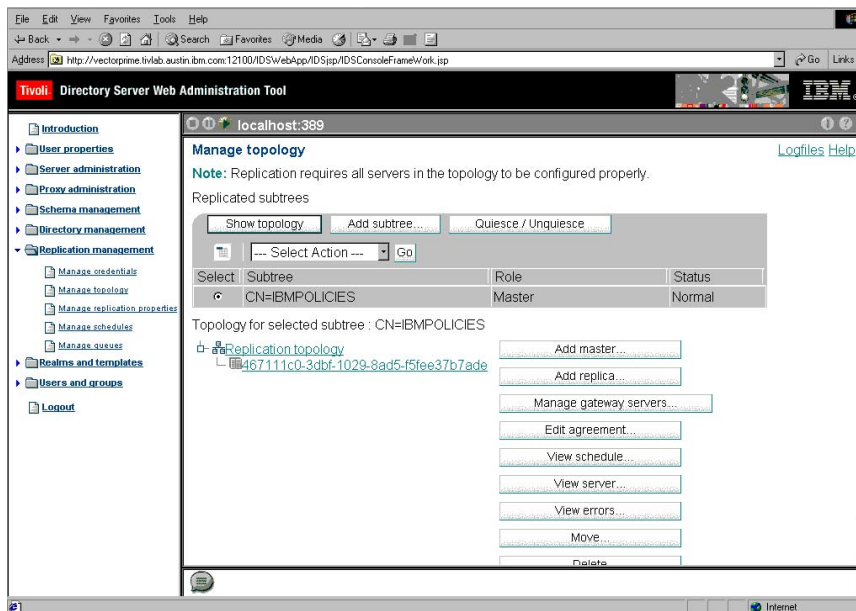


## IBM Tivoli Directory Server, Version 6.0

### Highlights

- **Provides advanced reliability and scalability, supporting hundreds of millions of entries through proven IBM DB2 Universal Database technology and built-in proxy server**
- **Enables robust replication capabilities for high-availability with both master/subordinate and peer-to-peer replication, with up to dozens of master servers**
- **Seamlessly integrates with IBM middleware, identity management and security products, and functions as the default directory for IBM WebSphere Application Server and IBM WebSphere Portal, IBM Tivoli Identity Manager and IBM Tivoli Access Manager, as well as the IBM AIX operating system**



Refreshed Web Administration Tool eases critical tasks such as managing replication topologies (pictured).

- **Provides extensible on demand identity infrastructure to leading business solutions through compliance with Lightweight Directory Access Protocol (LDAP), Version 3**
- **Supports leading platforms, including AIX, Sun Solaris, Microsoft Windows Server, HP-UX, and SuSE and RedHat Linux distributions; shares technology base with IBM platform-optimized directories: IBM Tivoli Directory Server for zSeries and IBM Directory Server for iSeries**

Enterprise security and identity management are top concerns for most IT departments. Leveraging advanced on demand capabilities, such as compliance management and IT service management, increasingly depends on a comprehensive identity data infrastructure. Today's directories are now the central identity data repository and a key integration point — where identity, security, applications, systems and network management, and other network services all converge to store and retrieve data.

#### **Gain greater control with an advanced enterprise directory**

IBM Tivoli® Directory Server, Version 6.0 helps companies meet today's IT challenges by providing a high-performance LDAP identity infrastructure. A powerful, security-rich and standards-compliant enterprise directory, Tivoli Directory Server, Version 6.0 is built to serve as the identity data foundation for rapid development and deployment of your Web applications and identity management initiatives by including strong management, replication and security features.

#### **Enable mission-critical security and authentication**

Tivoli Directory Server, Version 6.0 is built for identity management — with role supports, fine-grained access control and entry ownership. With Tivoli Directory Server, Version 6.0, you can reliably authenticate users while protecting your on demand business environment as you open up your internal business processes to customers, supply chain partners and automated transaction systems. With its advanced security capabilities, Tivoli Directory Server, Version 6.0 helps you:

- *Implement self-service and delegated administration by controlling data access down to the individual attribute level.*
- *Provide access to a limited number of attributes within an entry, allowing users to update a specific number of attributes while the rest are read-only.*
- *Securely encrypt the password values stored within the directory by supporting the latest encryption algorithms, including Advanced Encryption Standard (AES)-based password encryption.*
- *Set and enforce password policies on the directory server administrators.*
- *Use Secure Sockets Layer (SSL) technology to encrypt data that is transmitted on the wire.*

#### **Provide industry-leading reliability and easy implementation**

Tivoli Directory Server, Version 6.0 is ideal for global, mission-critical enterprise requirements where 24x7 availability is a must and exceptional performance is required. By leveraging DB2 Universal Database™, Tivoli Directory Server, Version 6.0 provides the reliability and stability needed for an on demand enterprise directory. It also offers robust replication features, including the ability to configure multiple master copies, and provides highly available implementations for important business applications across a variety of operating systems. And it seamlessly integrates with IBM middleware, identity management and security products, and functions as the default directory for WebSphere® Application Server and WebSphere Portal, Tivoli Identity Manager and Tivoli Access Manager, as well as the AIX® operating system.

#### **Deliver an open and scalable solution**

Unlike some vendors that build proprietary extensions into their directory that “prefer” their own provisioning applications, IBM takes an open approach to our directory technology. This ensures that our customers have a wide array of identity

provisioning and on demand business application choices.

### **Deliver high performance and massive scalability with a front-end proxy server**

Tivoli Directory Server, Version 6.0 also extends its scalability and reliability leadership by including a front-end proxy server. The proxy server automatically distributes reads and writes across a number of directory partitions, offering the potential for massive directory scalability to hundreds of millions of entries. The proxy server feature also provides automatic failover and load balancing between partitions running on back-end servers, which is transparent to the LDAP clients.

### **Help maximize reliability with advanced replication**

Tivoli Directory Server, Version 6.0 supports “peer-to-peer” replication, which allows dozens of master servers as well as partial and subtree replication. By handling replication conflicts through timestamps appended to the directory operation, Tivoli Directory Server, Version 6.0 can determine which operation to process first — minimizing the chance of replication stoppage due to a conflict. Plus, it enables multithreaded replication to help improve performance in environments that have a large amount of replication traffic.

### **Help optimize flexibility in directory infrastructure and architecture configuration**

By allowing for the placement of multiple instances of the directory server on a single hardware server, Tivoli Directory Server, Version 6.0 provides additional flexibility in directory infrastructure and architecture configuration. Servers with multiple power supplies and disk drives can now take advantage of these redundancies to host multiple Tivoli Directory Server, Version 6.0 instances.

### **Take advantage of additional features**

As part of its comprehensive directory services offerings, IBM offers professional services, including implementation services and identity provisioning. Plus, IBM offers IBM Tivoli Directory Integrator, a meta-directory that enables you to synchronize identity data across heterogeneous directories — significantly minimizing the cost of maintaining discontinuous directory systems.

Tivoli Directory Server, Version 6.0 offers additional features and benefits, including:

- *User-/group-specific search limits and identity assertions – protect directory data against denial of service attacks.*
- *Multiple directory server instances – configure both test and production environments, or mix directory server versions on a single server.*

- *Multihomed configuration – allows you to listen on specific IP address and port number to isolate directory traffic to a single network interface.*
- *Write-through cache – enables updates to be committed to the back-end data store.*
- *Entry ownership – provides a very robust delegated administration model.*
- *Client SDKs – includes 64-bit AIX client and Java™ access using standard J2EE™ interfaces.*
- *Audit, change and error logs – allow quick problem detection and prevention.*
- *National Language Support (NLS) – offers consoles and documentation available in many languages.*
- *Comprehensive and extensible schema – can be updated dynamically without server restart; all schema updates are replicated.*
- *Web-based administration console – allows users to perform all data-administration tasks from a remote client.*
- *Plug-in support – offers quick implementation of additional server capabilities.*



**Tivoli Directory Server,  
Version 6.0 runs on the  
following operating systems**

- AIX 5.1, 5.2, 5.3
- HP-UX 11i
- Sun Solaris 8, 9
- Microsoft® Windows NT®
- Windows® 2000, 2003
- IBM xSeries® Linux®:
  - SuSE Linux Enterprise Server 8
  - RedHat Enterprise Linux AS/ES 3.0
- IBM zSeries® Linux  
(31-bit versions only):
  - SuSE Linux Enterprise Server 8
  - RedHat Enterprise Linux AS/ES 3.0
- IBM iSeries™ and IBM pSeries® Linux:
  - SuSE Linux Enterprise Server 8, 8.2
  - RedHat Enterprise Linux AS/ES 3.0

**For more information**

For more information on details and prerequisites of these operating systems and any new operating systems certified, please see [www-306.ibm.com/software/tivoli/products/directory-server/platforms.html](http://www-306.ibm.com/software/tivoli/products/directory-server/platforms.html)

**Tivoli software from IBM**

An integral part of the comprehensive IBM on demand infrastructure solution, ITIL-aligned Tivoli IT Service Management software helps traditional enterprises, emerging on demand businesses and Internet businesses worldwide maximize their existing and future technology investments. Backed by know-how such as the Tivoli Unified Process methodology for linking IT operations to business processes and by world-class IBM services, support and research, Tivoli software provides a seamlessly integrated and flexible on demand business infrastructure management solution that uses robust security to help you connect employees, business partners and customers, and achieve your pressing, top-of-mind business agenda.

© Copyright IBM Corporation 2005

IBM Corporation  
Software Group  
Route 100  
Somers, NY 10589  
U.S.A.

Produced in the United States of America  
07-05  
All Rights Reserved

AIX, DB2 Universal Database, IBM, the IBM logo, iSeries, the On Demand Business logo, pSeries, Tivoli, WebSphere, xSeries and zSeries are trademarks of International Business Machines Corporation in the United States, other countries or both.

Linux is a trademark of Linus Torvalds in the United States, other countries or both.

Microsoft, Windows and Windows NT are trademarks of Microsoft Corporation in the United States, other countries or both.

Java and all Java-based trademarks are trademarks of Sun Microsystems, Inc. in the United States, other countries or both.

Other company, product and service names may be trademarks or service marks of others.